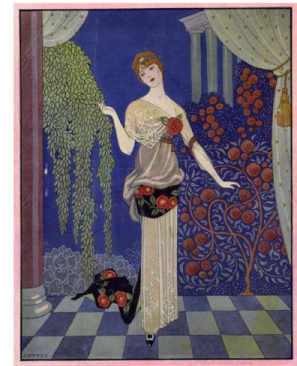
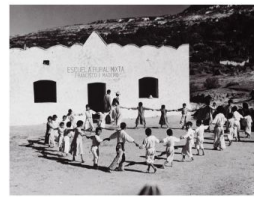
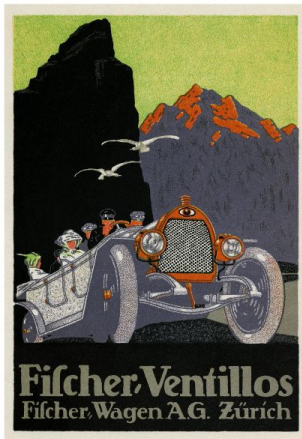




JSTOR Open Community Collections

Share your collections where research begins

Unlock the power of your special collections with JSTOR's [Open Community Collections](#). In addition to joining [hundreds of institutions](#) in making your content openly accessible to millions of JSTOR users, we've made the process effortless.



Benefits

- Reach millions of scholars, faculty, and students around the world where they begin their research – without paywalls.
- Make your collections discoverable alongside relevant scholarly content, including ebooks, journals, research reports, images, and other primary source materials.
- Promote your institution with a unique landing page for browsing, sub-collection groupings, and searching within your collections.
- Take advantage of Google indexing and accessibility through EBSCO Discovery Service™ (EDS), OCLC, and ProQuest/Ex Libris, along with the JSTOR platform's robust search, innovative tools for teaching and learning, and usage data.

[Host your collections for free on JSTOR through June 2023](#)

Images in this collage have been contributed by institutions through the Open Community Collections initiative. Christmas wreath and young woman in Santa costume, Punch Bowl cover. December, 1925. Image and data from University of Pennsylvania. C. Jones, Class of 1929. Image and data from Middlebury College. [Untitled]. Image and data from Dowd Modern Graphic History Library | Washington University in St. Louis. Tolbert, Julia Elizabeth. Cow Shed. Roundel (pair). Late 19th, early 20th century. Image and data from Wofford College. Julius Klinger. Das Weib im modernen Ornament. 1902. Image and data from Minneapolis College of Art and Design. Wood, Thomas Waterman. His Own Doctor. Image and data from Dartmouth University.